

**READ ALL INSTRUCTIONS COMPLETELY AND THOROUGHLY UNDERSTAND THEM BEFORE DOING ANYTHING.
CALL TOTAL CONTROL PRODUCTS TECH SUPPORT (916) 388-0288 IF YOU NEED ASSISTANCE.**

INSTALLATION GUIDE



300-0181 PINION SNUBBER FLOOR MOUNT KIT 71-73 MUSTANG

Description: Required for g-Bar suspension installation. Welds to factory pinion snubber mount; includes additional hardware.

Applications: '71-73 Mustang

WARRANTY NOTICE:

There are NO WARRANTIES, either expressed or implied. Neither the seller nor manufacturer will be liable for any loss, damage or injury, direct or indirect, arising from the use or inability to determine the appropriate use of any products. Before any attempt at installation, all drawings and/or instruction sheets should be completely reviewed to determine the suitability of the product for its intended use. In this connection, the user assumes all responsibility and risk. We reserve the right to change specification without notice. Further, Chris Alston's Chassisworks, Inc., makes **NO GUARANTEE** in reference to any specific class legality of any component. **ALL PRODUCTS ARE INTENDED FOR RACING AND OFF-ROAD USE AND MAY NOT BE LEGALLY USED ON THE HIGHWAY.** The products offered for sale are true race-car components and, in all cases, require some fabrication skill. **NO PRODUCT OR SERVICE IS DESIGNED OR INTENDED TO PREVENT INJURY OR DEATH.**

Total Control Products
A Chris Alston's Chassisworks, Inc. Brand
8661 Younger Creek Drive
Sacramento, CA 95828
Phone: 916-388-0288
Technical Support: tcptech@cachassisworks.com



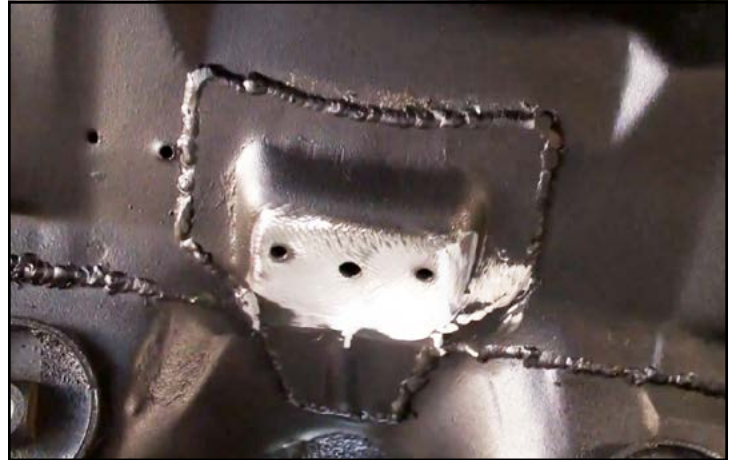
PARTS LIST

300-0181 - Pinion Snubber Floor Mount Kit for '71-73 Mustang

Qty	Part Number	Description
2	3100-038F1.00Y	Bolt 3/8-24 x 1" hex head, Grade 8
2	3108-038L-C	Lock washer 3/8" regular
2	3157-038F-C	Fender washer 3/8"
1	7959-0278	Pinion snubber floor mount

INSTRUCTIONS

1. Reinforce the welds around the pinion snubber base and along the seam that runs across the body.
2. Prep the weld area by removing any debris and paint down to clean metal.
3. With the suspension cradle temporarily in position, place the floor mount between the body and cradle, then insert the two bolts to position and secure.



4. Tack weld the floor mount against the body before removing the cradle for final welding.
5. Weld completely around the floor mount.



6. Paint the area to prevent it from rusting. Cover the threads prior to painting.
7. With the new floor mount in place the remaining suspension installation steps can be performed.

Installation Video

https://www.youtube.com/watch?v=_ti3yzvj7fl

