



Product Information:

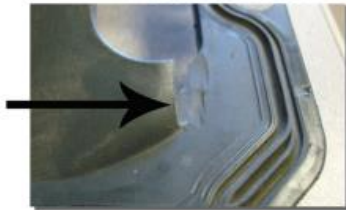
12-734, 15-730, 15-734, 15-736 & 15-738

Ford 5.0 Coyote Oil Pans.

When installing these oil pans the oil pan locating pins on the factory Coyote windage tray will need to be removed. These pins aid in production assembly of the engine, but are not required for this installation. To make the modification cut off the plastic pins and file the spot smooth so the oil pan and the tray lay flat against each other.

OE Tray Installation

The OE windage tray/gasket combination (BR3Z 6710-A) can be used with slight modification. The windage tray will need to be trimmed on the back side of the motor on both sides as shown in the image below.



15-738 Front Sump Pan.

Due to the lack of OEM front sump Coyote applications there are a few modifications needed to properly install our front sump coyote pan.



Image left shows the location you will need to modify the tray in order to properly mount the pickup tube. In addition to this modification you will also need to move the pickup mounting bolt from the OE position to this location.