

*2005-2011 MUSTANG TIGER CAGE  
ROAD RACE BAR INSTRUCTIONS MANUAL*



# ridetech



*Air Ride Technologies*



## TIGER CAGE

Thank you for purchasing our 2005 -2011 Mustang Tiger Cage Road Race Bar Assembly. Please read through all of the instructions first and then start installing the kit.

We hope that you enjoy the added performance that this products brings to your Mustang.

[www.ridetech.com](http://www.ridetech.com)

**2005-2011 MUSTANG TIGER CAGE  
ROAD RACE BAR ASSEMBLY  
COMPONENTS LIST  
PART #42152000**



Air Ride Technologies  
350 S. St. Charles St. Jasper, In. 47546  
Ph. 812.482.2932 Fax 812.634.6632  
[www.ridetech.com](http://www.ridetech.com)

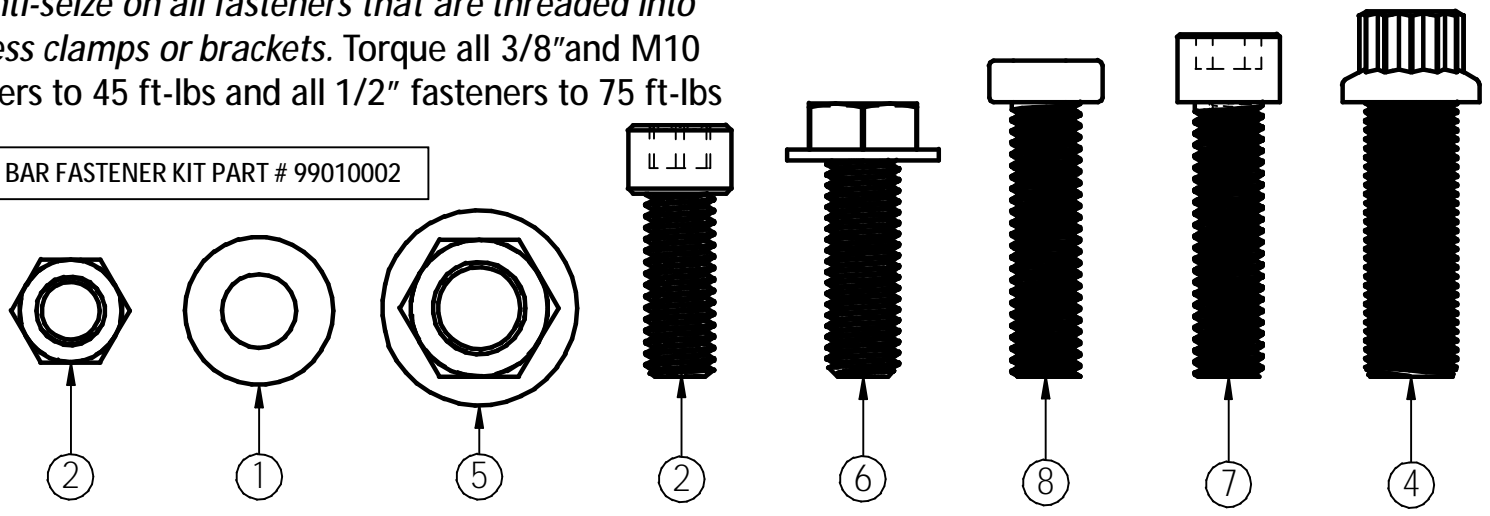
**PART # 42152000 MUSTANG TIGER CAGE ROAD RACE BAR ASSEMBLY COMPONENTS:**

<u>QTY.</u>	<u>PART #</u>	<u>DESCRIPTION</u>
2	42152001	MUSTANG SEAT BRACKET FRONT LOWER
2	42150009	MUSTANG LOWER PLATE
1	42152003	MUSTANG DOOR BAR BRACKET UPPER DRIVER SIDE
1	42152004	MUSTANG DOOR BAR BRACKET UPPER PASSENGER SIDE
2	42152005	MUSTANG DOOR BAR BENT BRACKET
1	42152006	MUSTANG ROAD RACE BAR DRIVER SIDE
1	42152007	MUSTANG ROAD RACE BAR PASSENGER SIDE
2	49990005	TIGER CAGE ROLL BAR PIVOT PLATE
1	49990003	TIGERCLAMP P ½ (THREADED)
1	49990001	TIGERCLAMP P ½
1	49990004	TIGERCLAMP D ½ (THREADED)
1	49990000	TIGERCLAMP D ½
1	99010002	MUSTANG TIGER CAGE DOOR BAR FASTENER ASSEMBLY
1		TUBE OF ANTI-SEIZE

# FASTENER LIST ROAD RACE BAR

*Use anti-seize on all fasteners that are threaded into stainless clamps or brackets. Torque all 3/8" and M10 fasteners to 45 ft-lbs and all 1/2" fasteners to 75 ft-lbs*

ROAD RACE BAR FASTENER KIT PART # 99010002

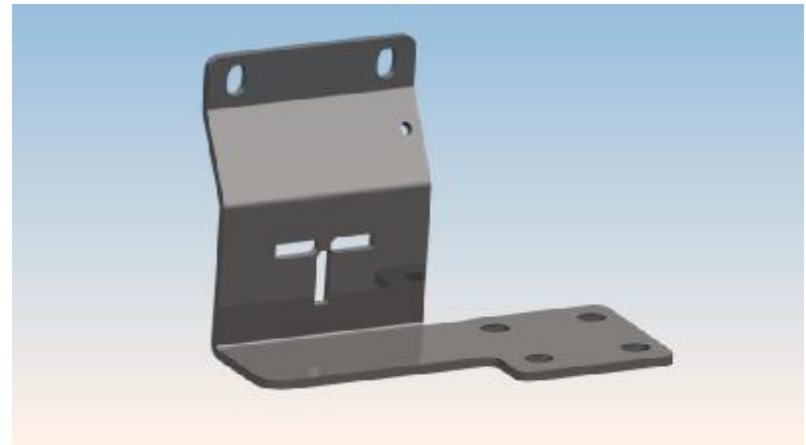


Item Number	Document Number	Title	Material	Quantity
1		3/8" FLAT WASHER	Zinc	14
2		3/8" X 16 - 1" LONG SS ALLEN HEAD	Nickel Plated Steel	8
3		3/8" - 16 LOCKING NUT	Zinc	12
4		1/2" - 20 X 1 1/2" LONG 12 POINT FLANGE HEAD CAP SCREW	Nickel Plated Steel	2
5		1/2" - 20 HEX NUT	Nickel Plated Steel	2
6		M10 - 15MM 30MM LONG	Nickel Plated Steel	2
7		3/8" - 16 x 1 1/2" long socket head cap screw	Nickel Plated Steel	10
8		3/8" x 1 1/2" - 16 BOLT	Zinc	2

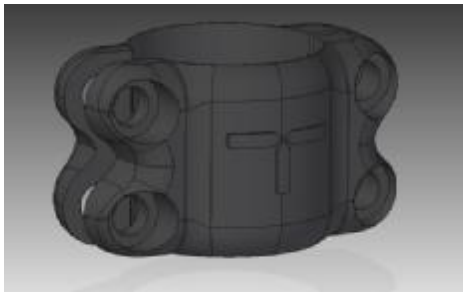
# COMPONENTS IN KIT



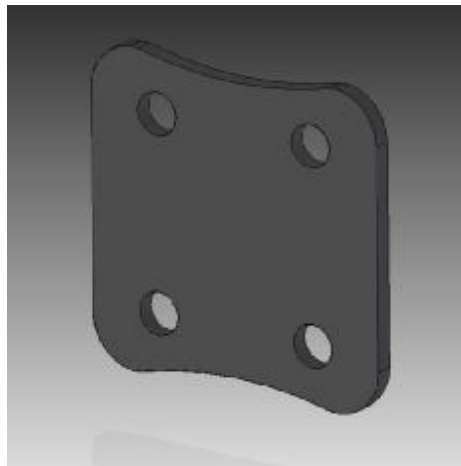
42152003 MUSTANG DOOR BAR BRACKET UPPER DRIVER SIDE QTY 1



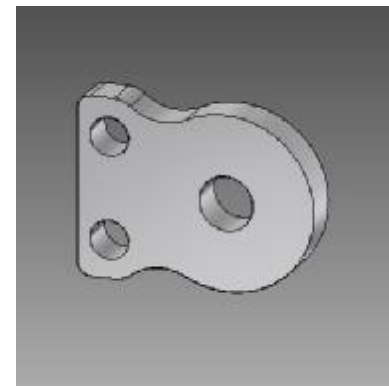
42152004 MUSTANG DOOR BRACKET UPPER PASSENGER SIDE QTY 1



49990004 TIGER CAGE CLAMP QTY 1  
49990000 QTY 1  
49990003 QTY 1  
49990001 QTY 1

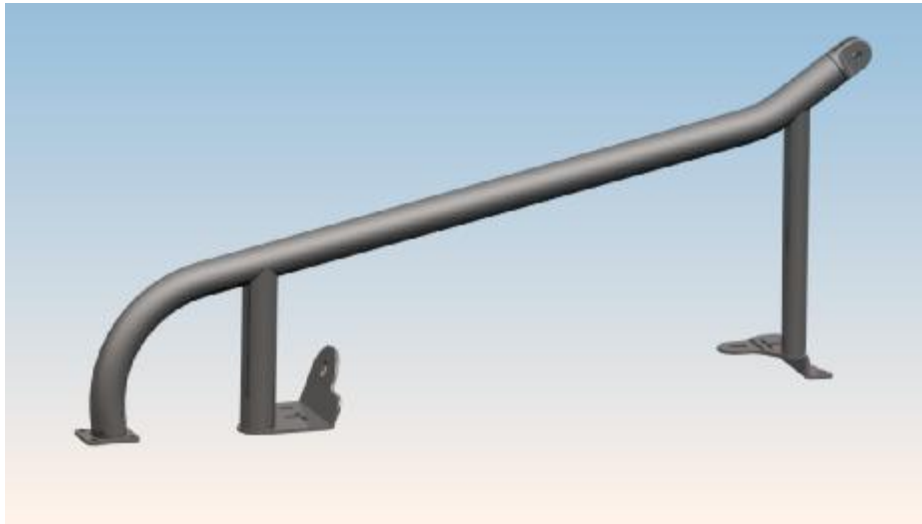


42150009 MUSTANG  
LOWER PLATE QTY 2

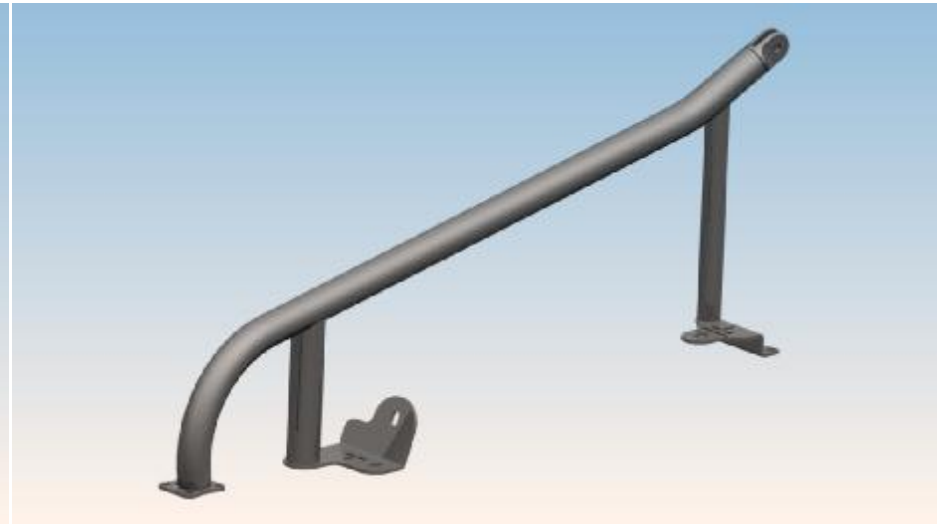


49990005 TIGER CAGE  
PIVOT PLATE QTY2

# COMPONENTS IN KIT



42152006 MUSTANG DOOR BAR DRIVER SIDE QTY 1

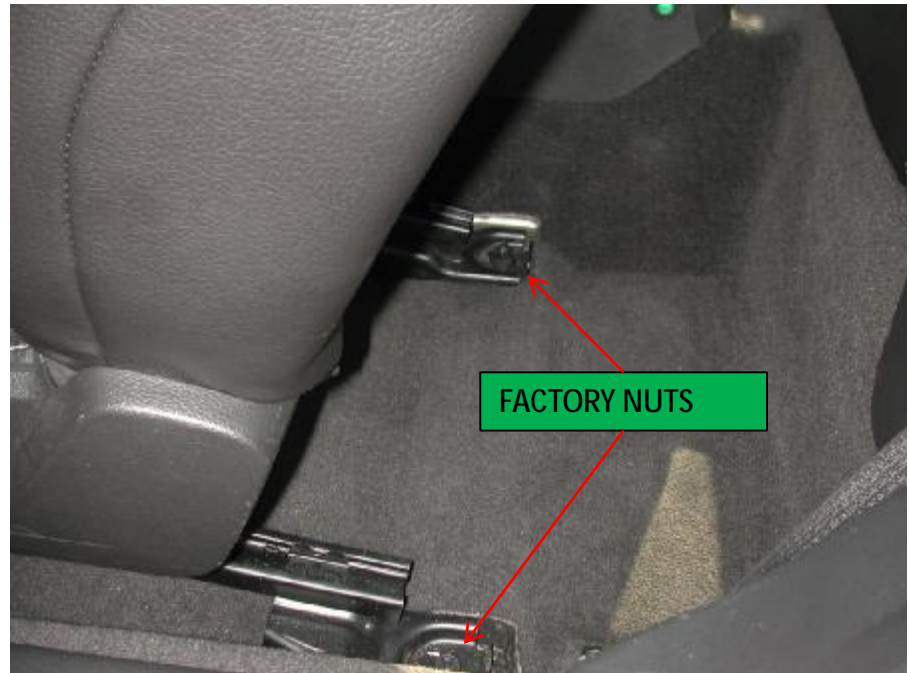
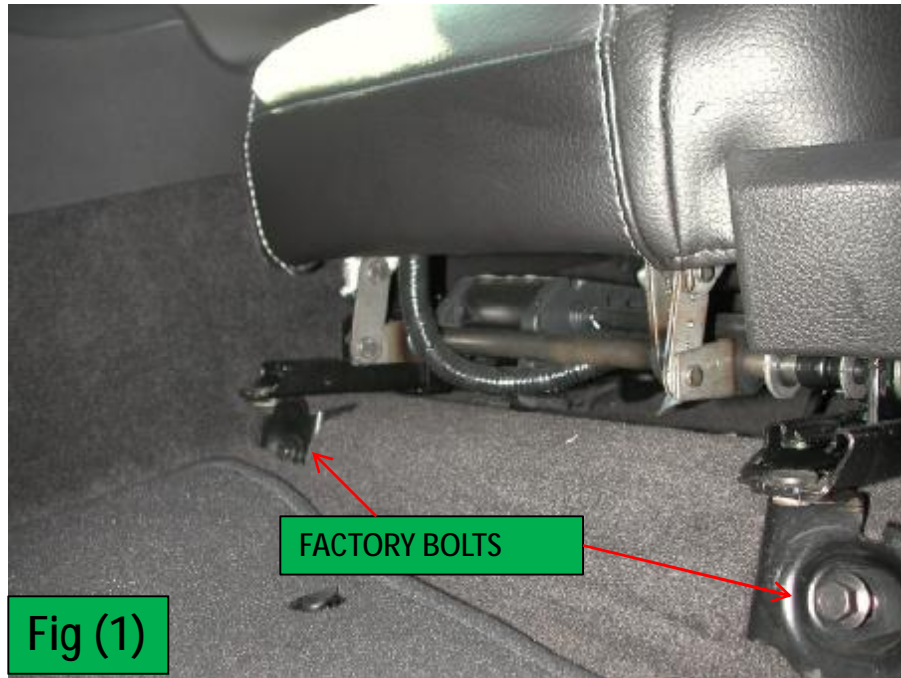


42152007 MUSTANG DOOR BAR PASSENGER SIDE QTY 1



42152001 MUSTANG SEAT BRACKET FRONT LOWER QTY 2

## PARTS TO REMOVE BEFORE INSTALLATION



- Removal of the seat fasteners is recommended to allow you more access to install the Tiger Cage Road Race bars.
- There are 2 bolts in the front of the seat, and two nuts in the rear of the seat that hold the seat to the floor pan (*see fig 1*).
- Another good idea that we do here at Ridetech is masking off the door jamb area to keep it from being scratched during the installation of the door bars.

# REMOVE FRONT KICK PANELS



Driver side kick panel



Passenger side kick panel

- Remove the front kick panels from the Mustang.
- They are clipped on.
- The passenger side also has the fuse panel door that will need to be removed with the kick panel.
- Next roll the carpet back.

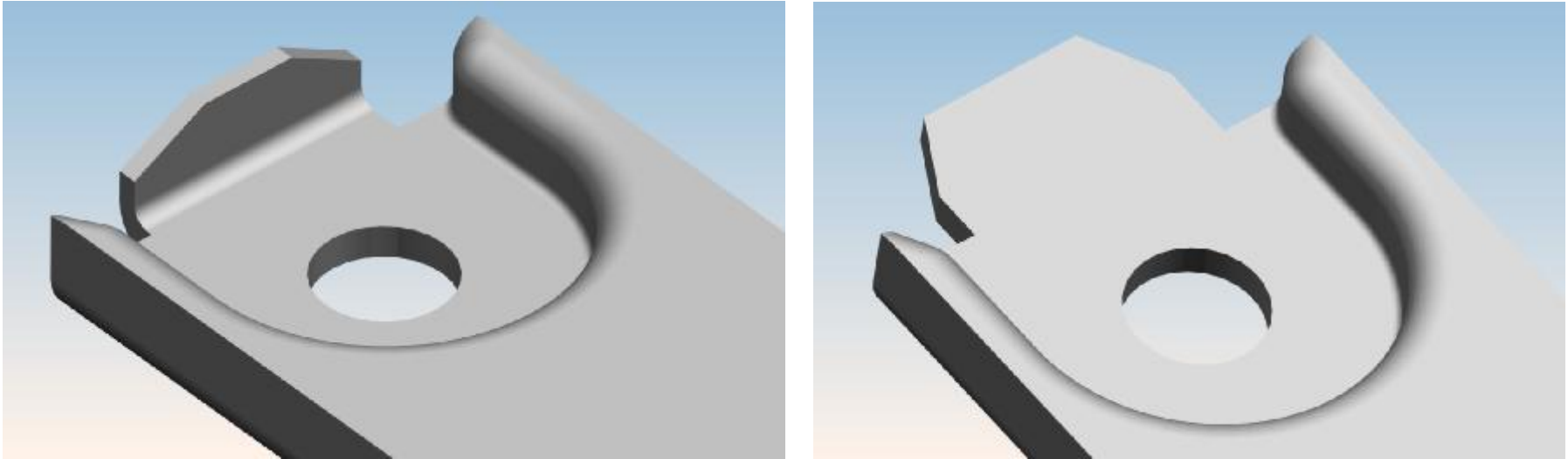


# MODIFICATION OF PASSENGER SIDE KICK PANEL



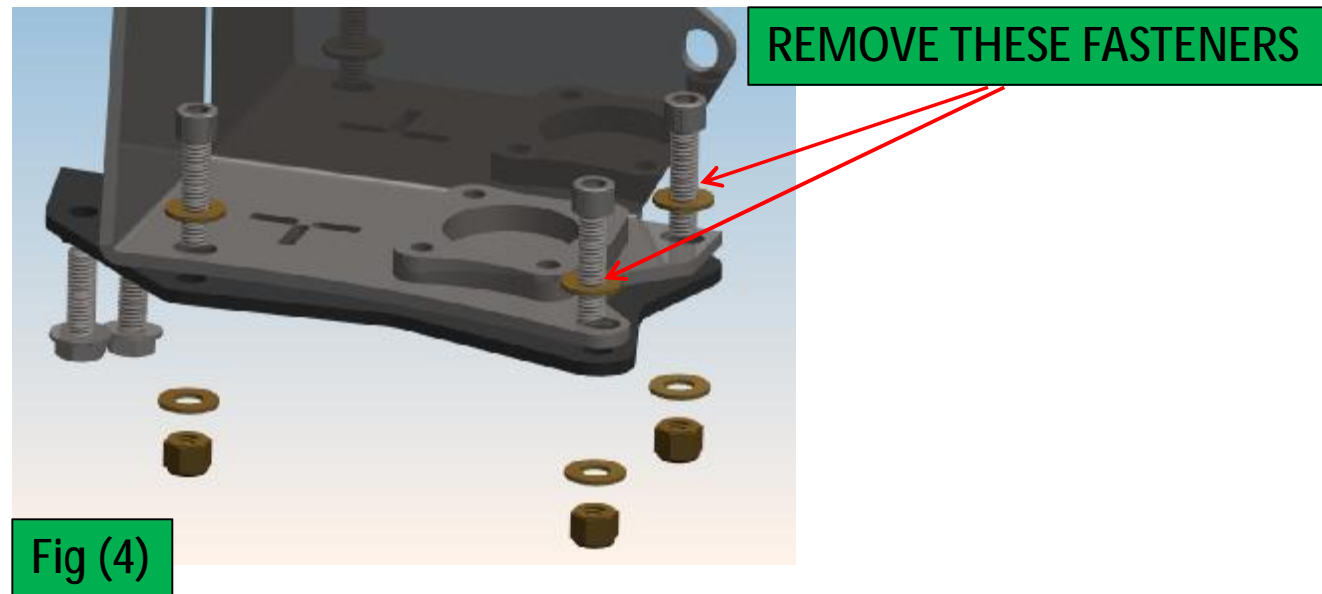
- The passenger side front kick panel will need to be modified for the Door Bar to fit.
- It will need to be cut out for clearance to the Door bar as shown. (see *fig 3*).

# *REAR SEAT TRACK MODIFICATION*



- The Mustang seat track has a tab on the rear of it.
- This tab must be bent down for the Door Bar brackets to fit.

# REMOVE BOLTS FROM EXISTING UPPER MAIN HOOP BRACKETS



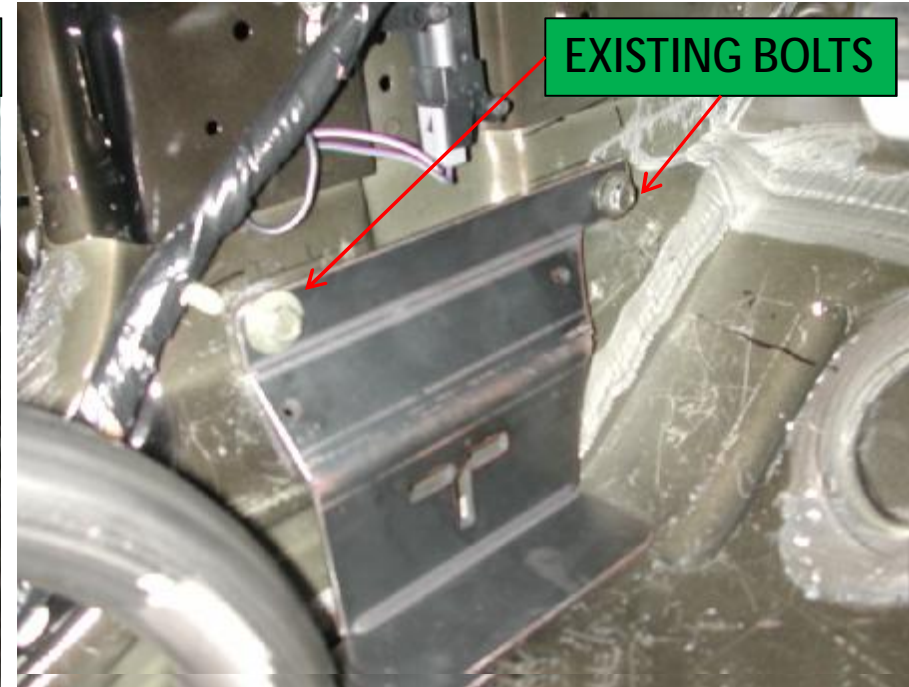
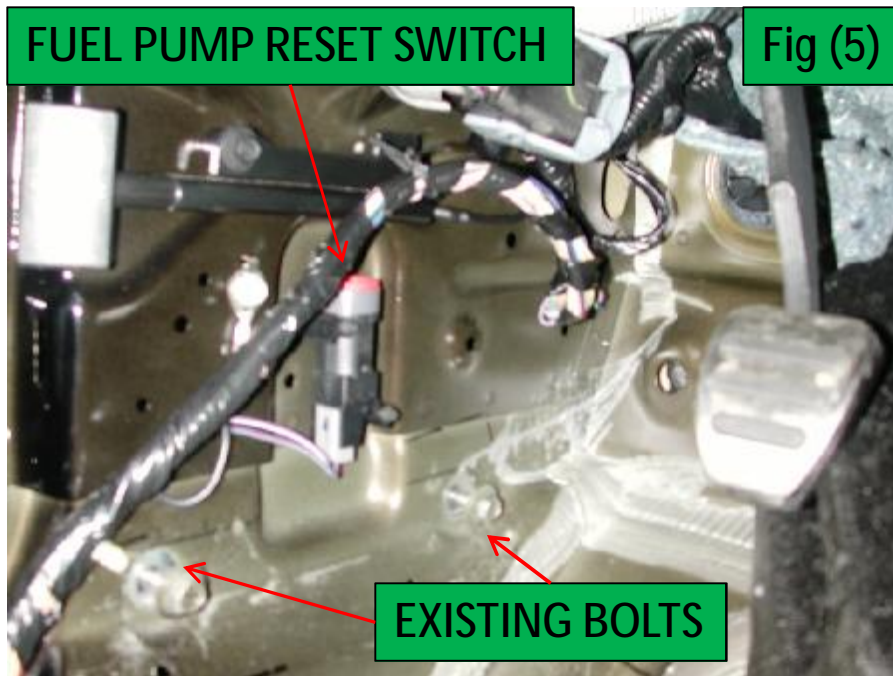
- The front bolts on the Main Hoop Upper Brackets will need to be removed for the installation of the Door Bars. (see fig 4)

# *ROAD RACE BAR PART # 42152006 AND PART # 42152007 INSTALLATION*



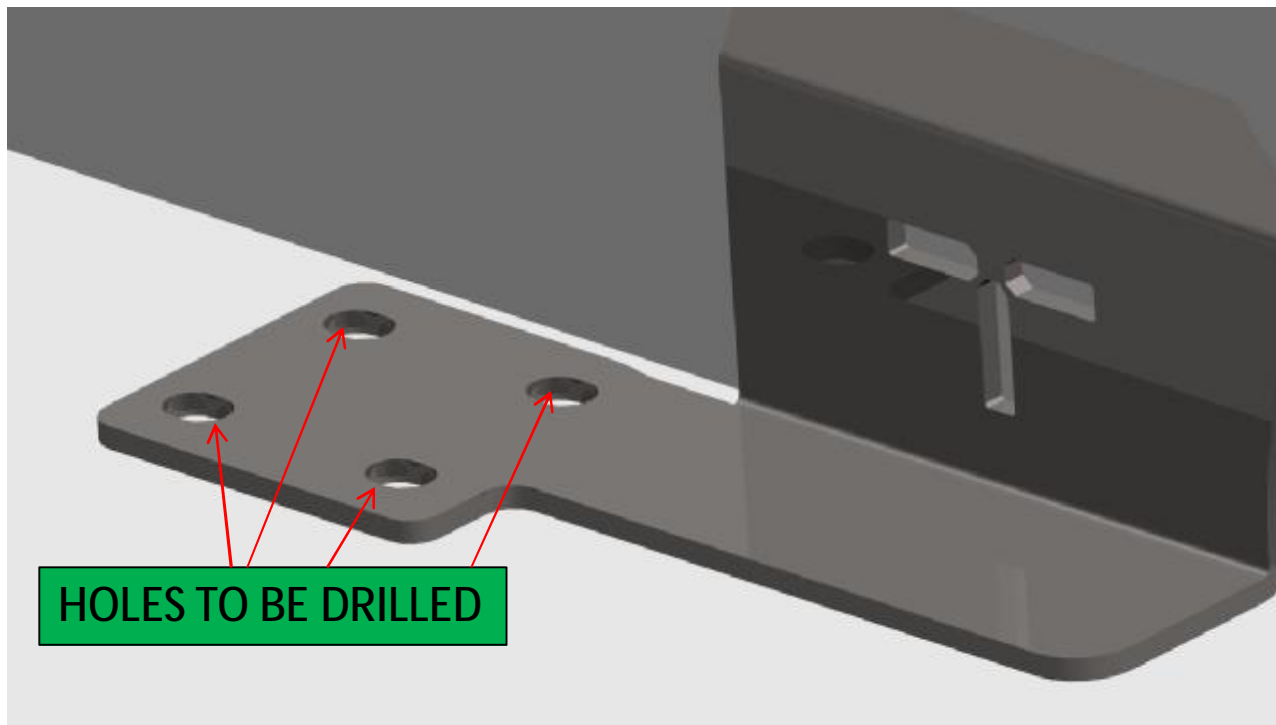
- The Mustang Road Race Door Bar Assembly Kit is an optional kit that works with the Mustang Main Hoop Assembly.
- This kit uses some of the existing brackets from the Mustang Main Assembly kit.

# INSTALLATION OF PART #42152003 AND PART #42152004



- The first bracket to install is the Mustang Door Bar bracket upper driver side.
- This bracket is aligned to two existing bolts that are located under the fuel pump reset switch. (see fig 5)
- Remove the two existing bolts.
- Line up the bracket to the existing holes.
- Install the two bolts back into the kick panel and tighten.

# INSTALLATION OF MUSTANG DOOR BAR BRACKETS



- Mark the four holes in the Mustang Door Bar bracket.
- Drill four 7/16" holes through the floor pan.
- Fit the passenger side Mustang Door Bracket Upper the same as the Driver Side and repeat steps.
- These brackets can be installed on top of the carpet or below.
- Once they are installed you can reinstall the kick panels.

# INSTALLATION OF MUSTANG DOOR BAR

LOCATE THE REAR BRACKET TO  
MAIN HOOP UPPER BRKT AND  
SEAT STUD

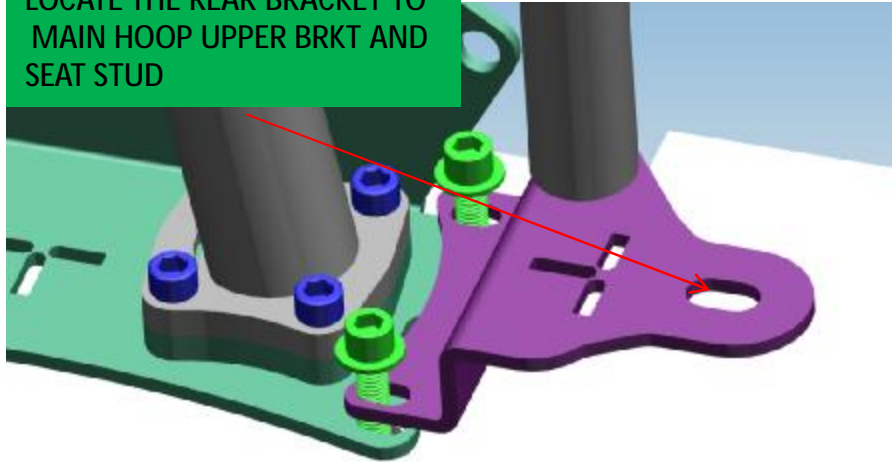


Fig (6)

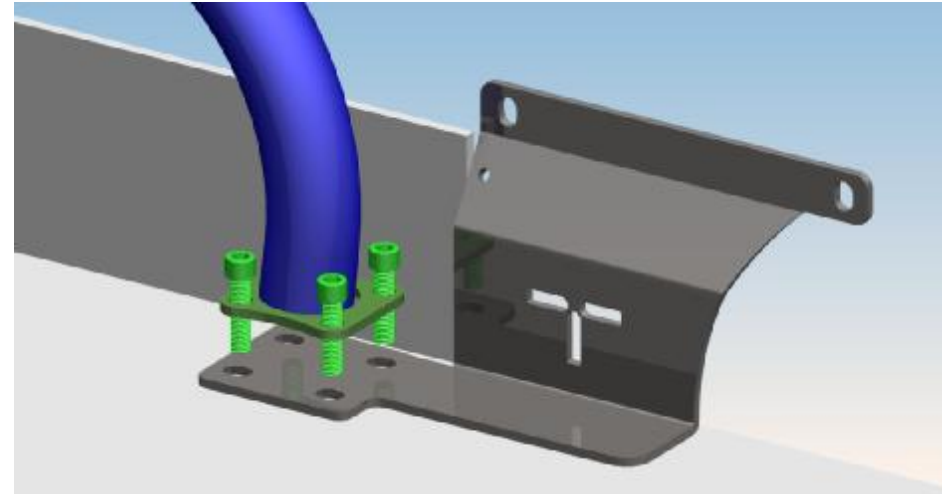
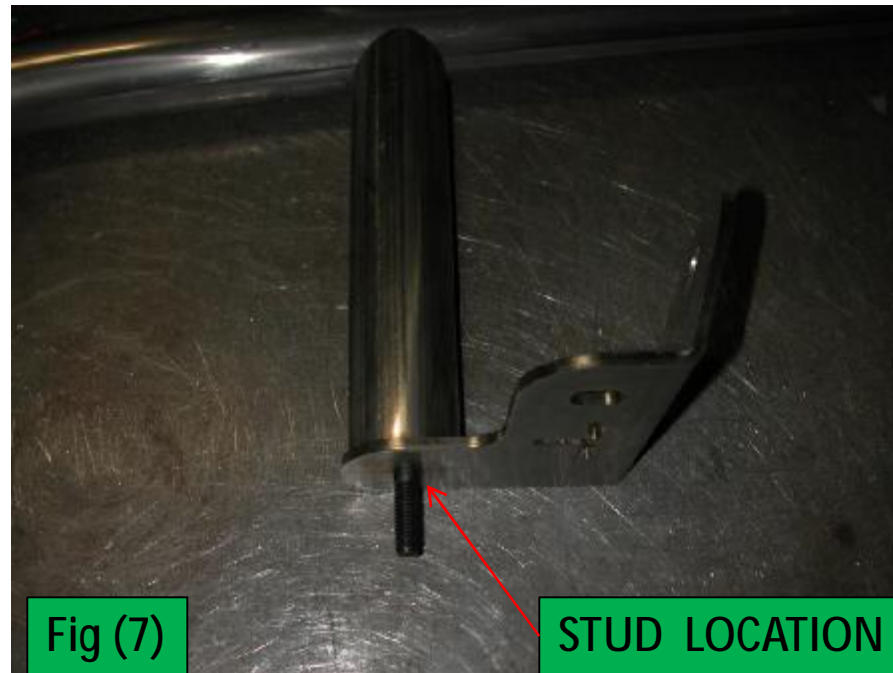


Fig (7)

- Next is the installation of the Mustang Door Bar.
- To install the door bar you will need to locate it to the Door Bar Bracket Front and the Rear Main Hoop Upper Bracket. (see fig 6)
- Line up the front of the door bar to the four holes in the Door Bracket upper (see fig 7).
- Now you will need to set the door bar into the Mustang and mark where the Front Door Bar support stud hole will need to be drilled.

# MUSTANG ROAD RACE DOOR BAR INSTALLATION



- Once it is located you will need to drill out a 7/16" hole for the stud located under the front door bar support. (see *fig 7*)
- After the hole is drilled you can put the carpeting back down.
- Make sure to cut a hole in the carpet for the stud to go through.



# MUSTANG ROAD RACE DOOR BAR INSTALLATION



Fig(8)

- Now it is time to put the Road Race Bar into the car.
- The easiest way to do this is to roll the seat toward the center of the car with the door bar underneath it.
- Make sure to line up the Mustang Door Bar Support stud to the hole in the floor pan.
- The Mustang Front Seat bracket sit on the outside of the front seat bolt location.  
(see fig 8)

# MUSTANG ROAD RACE DOOR BAR INSTALLATION

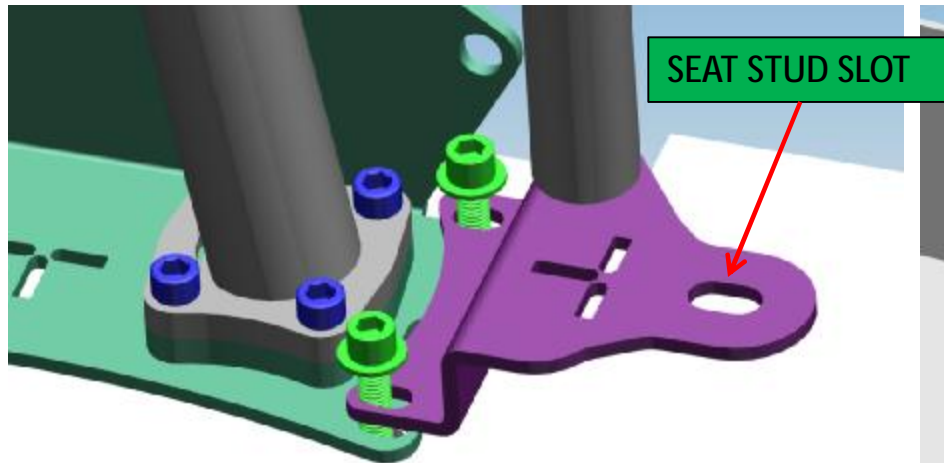


Fig (6)

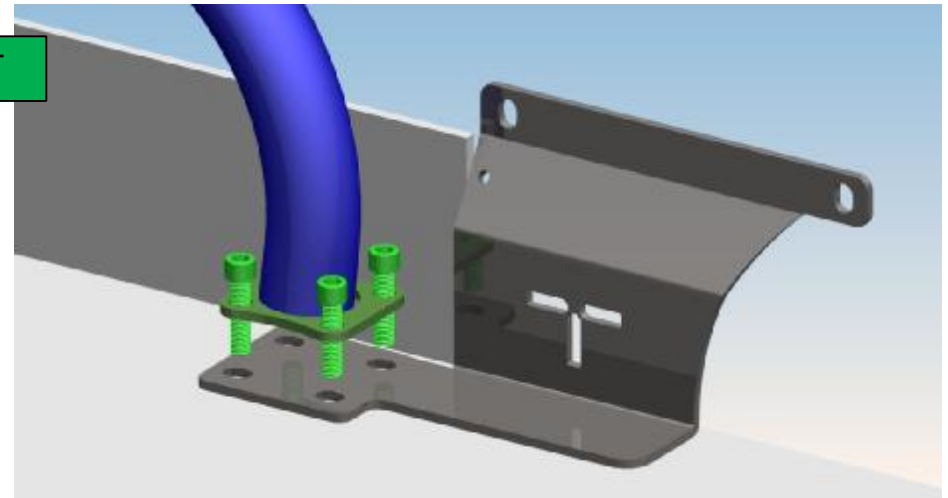
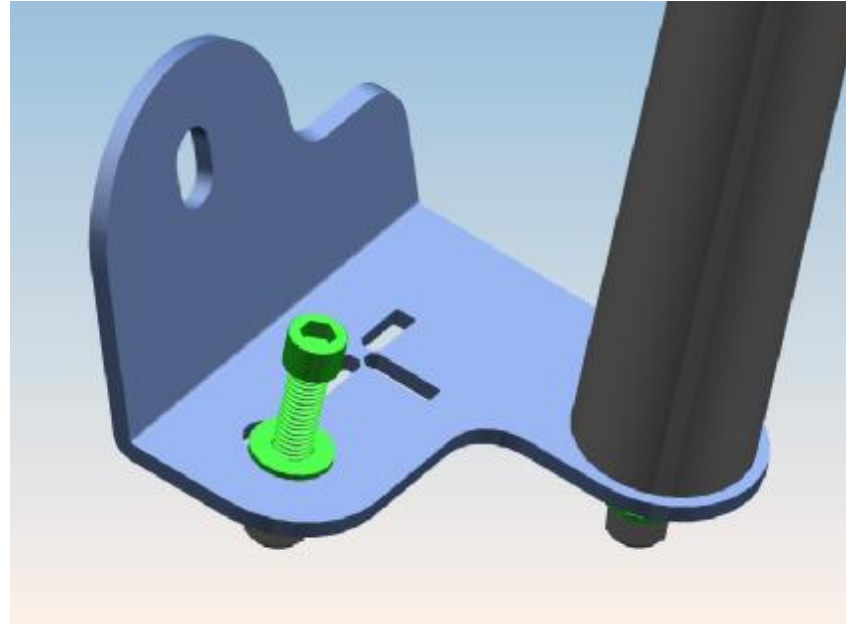


Fig (7)

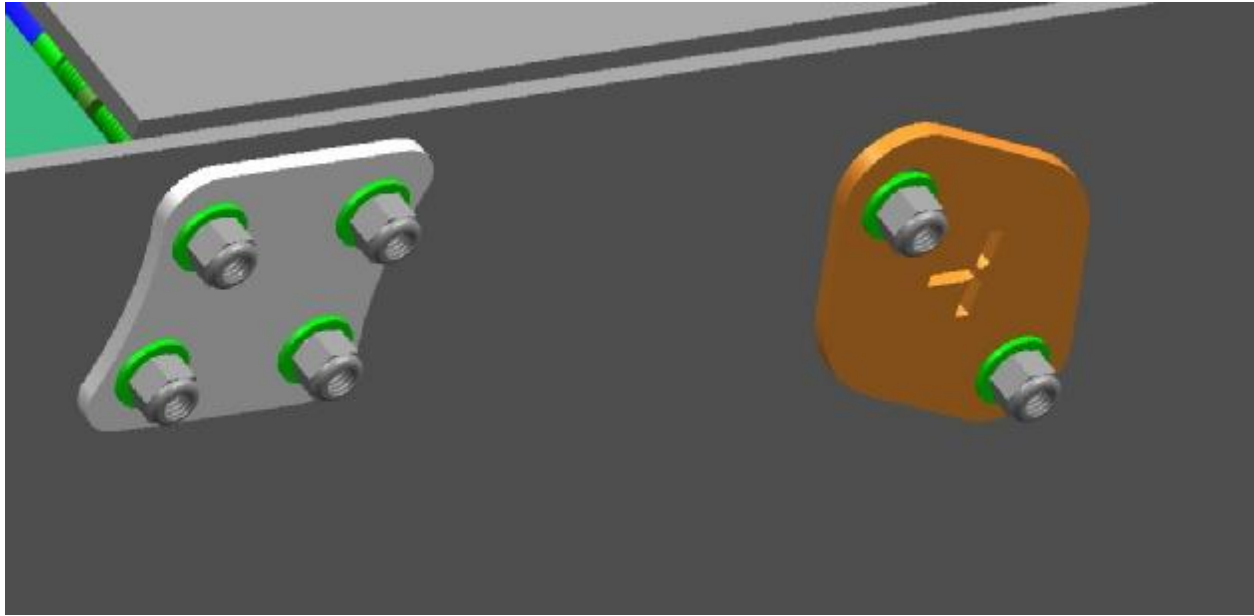
- Now that you have the Road Race bar under the seat and in the car, line up the seat mounting stud on the Mustang Rear Seat Bracket and the Mustang Front Seat bracket to the factory seat mounting holes.
- Now install the two 3/8"-16 x 1 1/2" bolts (#7), 3/8" flat washers (#1) through the Mustang Rear seat bracket. (see fig 6)
- Install the factory rear seat nuts.
- Install four 3/8"-16 x 1 1/2" long allen head bolts (#7) through the Mustang Front Door Bracket Upper. (see fig 7)

# *INSTALLATION OF ROAD RACE DOOR BAR*



- Install one 3/8"-16 x 1 ½" long allen head bolt (#7) and 3/8" flat washer (#1) through the Mustang Seat bracket front upper.

# *LOWER PLATE INSTALLATION*



- Once the bolts are through the Upper Brackets, you can install the Mustang Lower Plate, and the Mustang Lower Seat Bracket.
- Install six 3/8" flat washers (#1), and six 3/8"-16 locking nuts onto the 3/8"-16 x 1 1/2" bolts from the upper brackets.
- Tighten.

# *TIGER CLAMP ORIENTATION*



- In order to keep the "T" in the casting facing up, and the bolts facing the correct direction, there are two different direction clamps. Clamp half "A" will be mated to clamp half "B", Clamp half "C" will be mated to clamp half "D". Be very careful as to which clamp halves you are bolting together.
- In order to keep the "T" in the casting facing up, and the bolts facing the correct direction, there are two different direction clamps. Be very careful as to which clamp halves you are bolting together.
- A correctly assembled clamp should look like the one in the picture shown above; there should be a gap on one side for the tab to slide into.
- Assemble the clamps to the main hoop. Use clamp D on the driver side and clamp P on the passenger side.

# INSTALLATION OF TIGER CLAMPS AND MUSTANG DOOR BAR BENT BRACKET

MUSTANG BENT BRKKT

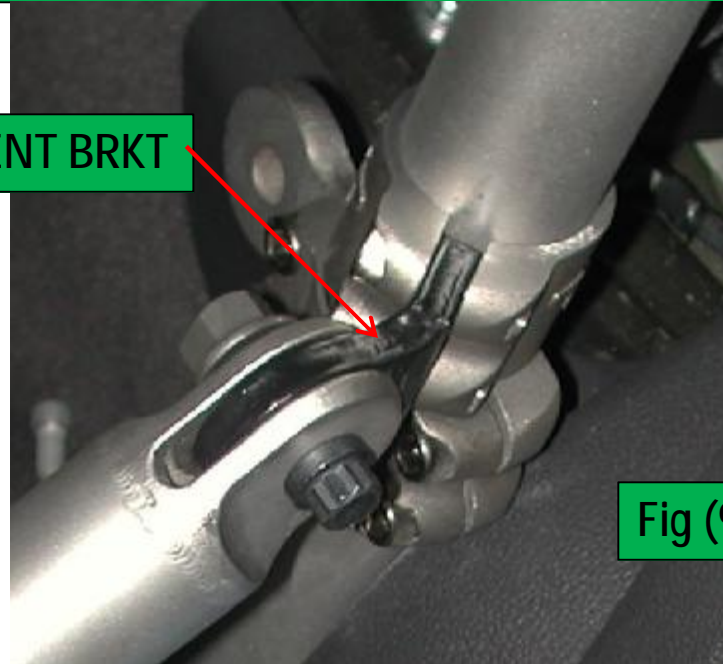


Fig (9)

- Install Tiger Cage Clamp around the Main Hoop.
- Insert the Mustang Bent Bracket into the front of the Tiger Clamp. (see fig 9)
- Install two 3/8"-16 x 1" (#2) long allen head bolts into the front Tiger Clamp holes.
- Install two 3/8"-16 x 1" (#2) long allen head bolts into the rear of the Tiger Clamp.
- Install two 1/2"-20 x 1 1/2" (#4) long 12 point bolts into the door bar.
- Install two 1/2" -20 (#5) hex nuts and tighten.

# SEAT BOLTS



- Install the factory seat bolt that is near the tunnel.
- The outer bolt will be replaced with a longer bolt supplied in the kit.
- Install the M10-1.5mm x 30mm (#6) long bolt into the outer front Mustang Seat bracket and tighten.
- Check all bolts and nuts to make sure they are tight.
- Now the Door Bar installation is complete.

# ***MUSTANG ROAD RACE DOOR BAR INSTALLED***



- This is what your new Road Race Bar will look like once it is installed.
- Please enjoy your new Tiger Cage from Ridetech!!!!!!!!!!!!