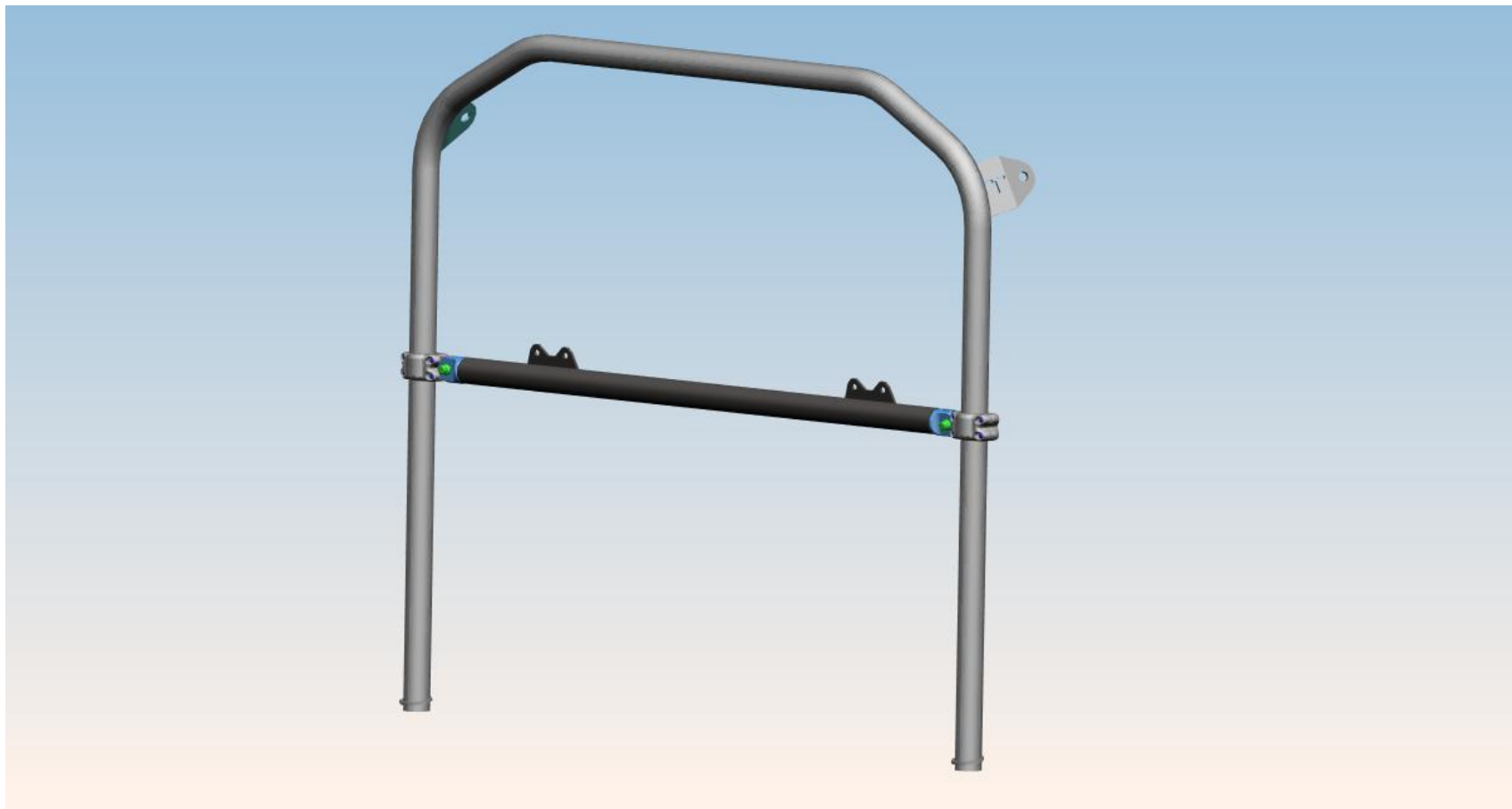


*2005-2011 MUSTANG TIGER CAGE
SHOULDER SEAT BELT BAR INSTRUCTIONS MANUAL*



ridetech



Air Ride Technologies



TIGER CAGE

Thank you for purchasing our 2005 -2011 Mustang Tiger Cage Shoulder Seat Belt Bar. Please read through all of the instructions first and then start installing the kit.

We hope that you enjoy the added performance that this products brings to your Mustang.

www.ridetech.com

**2005-2011 MUSTANG TIGER CAGE
SHOULDER BAR ASSEMBLY
COMPONENTS LIST
PART #42153000**



Air Ride Technologies
350 S. St. Charles St. Jasper, In. 47546
Ph. 812.482.2932 Fax 812.634.6632
www.ridetech.com

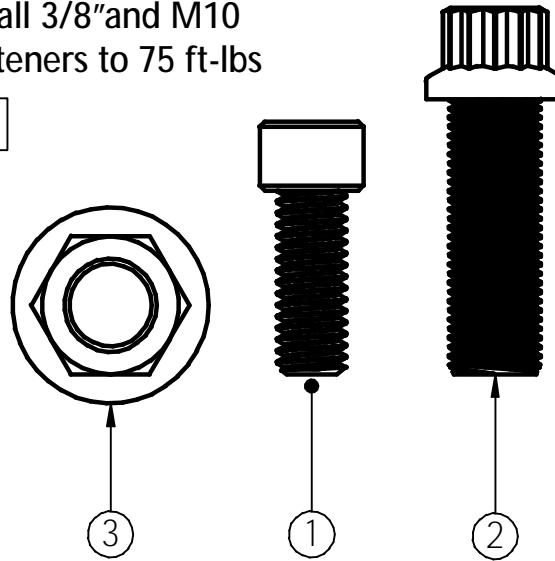
PART # 42153000 MUSTANG TIGER CAGE DOOR BAR ASSEMBLY COMPONENTS:

<u>QTY.</u>	<u>PART #</u>	<u>DESCRIPTION</u>
1	42153001	MUSTANG SEAT BELT BAR
2	49990005	TIGER CAGE ROLL BAR PIVOT PLATE
1	49990003	TIGERCLAMP P ½ (THREADED)
1	49990001	TIGERCLAMP P ½
1	49990004	TIGERCLAMP D ½ (THREADED)
1	49990000	TIGERCLAMP D ½
1	99010003	MUSTANG TIGER CAGE SHOULDER BAR FASTENER ASSEMBLY
1		TUBE OF ANTI-SEIZE

FASTENER LIST SEAT BELT BAR

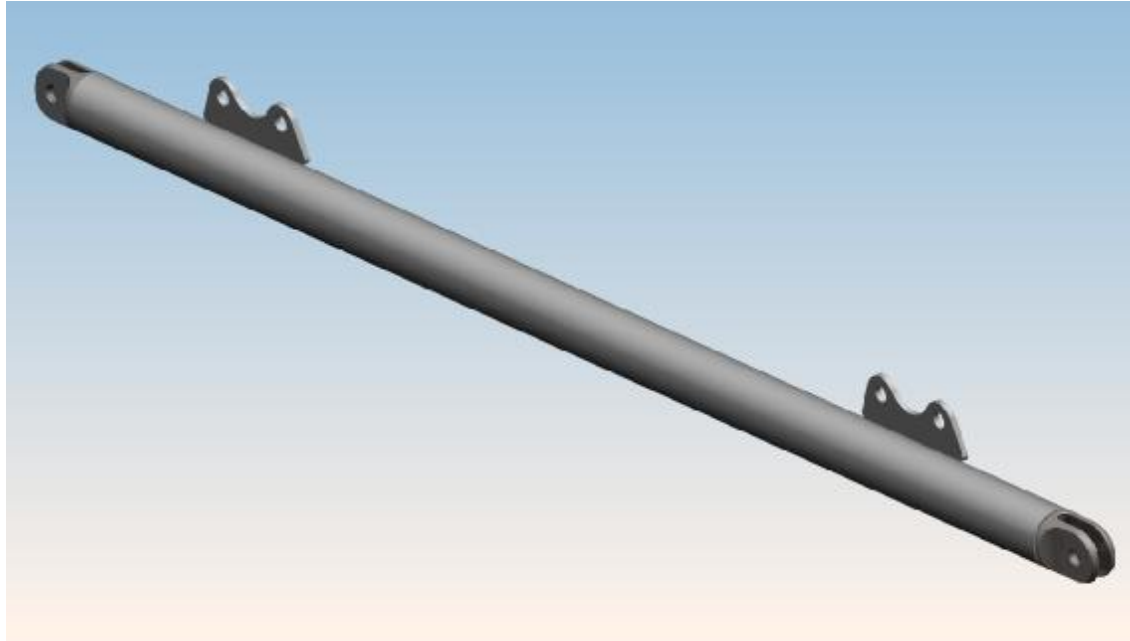
Use anti-seize on all fasteners that are threaded into stainless clamps or brackets. Torque all 3/8" and M10 fasteners to 45 ft-lbs and all 1/2" fasteners to 75 ft-lbs

SEAT BELT BAR FASTENER KIT PART # 99010003

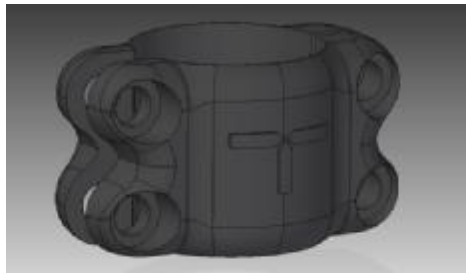


Item Number	Title	Material	Quantity
1	3/8" X 16 - 1" LONG SS ALLEN HEAD	Nickel Plated Steel	8
2	1/2" - 20 X 1 1/2" LONG 12 POINT FLANGE HEAD CAP SCREW	Nickel Plated Steel	2
3	1/2" - 20 HEX NUT	Nickel Plated Steel	2

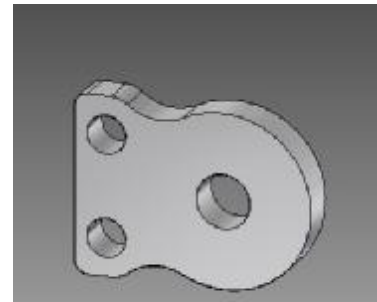
COMPONENTS IN KIT



42153001 MUSTANG SEAT BELT BAR QTY 1

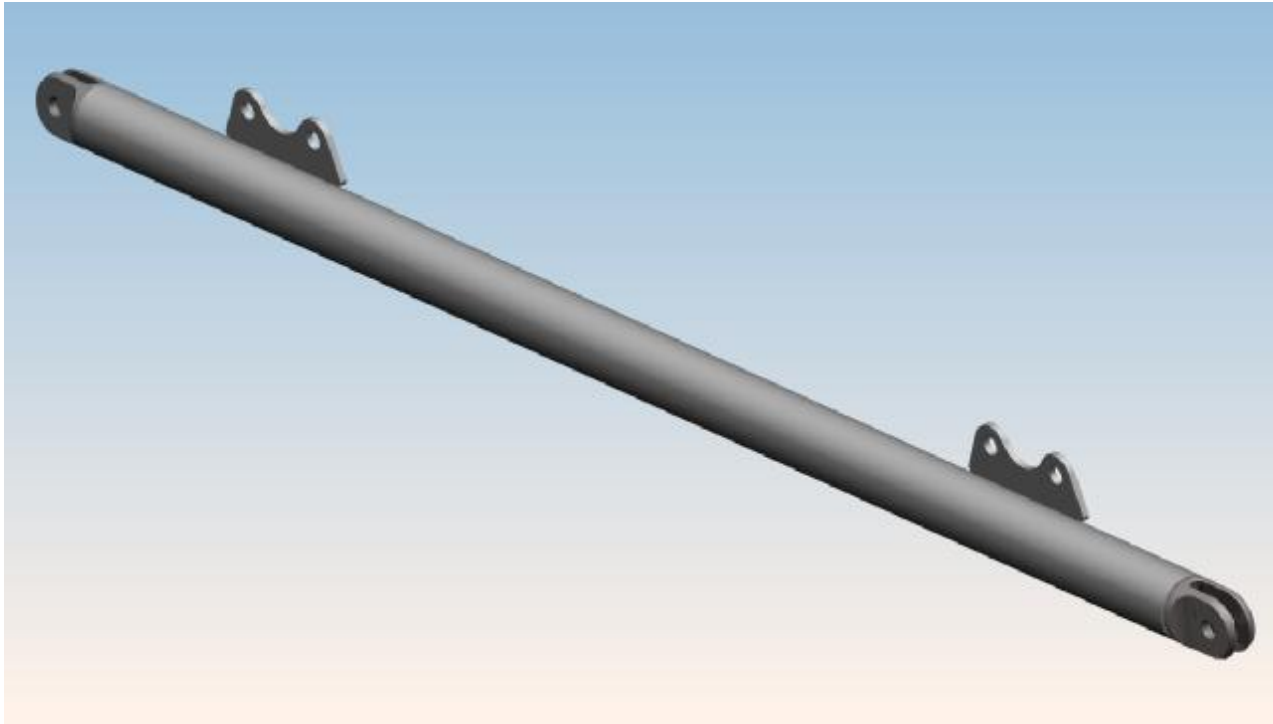


49990004 TIGER CAGE CLAMP QTY 1
49990000 QTY 1
49990003 QTY 1
49990001 QTY 1



49990005 TIGER CAGE
PIVOT PLATE QTY 2

SHOULDER SEAT BELT BAR PART ASSEMBLY PART # 42153000



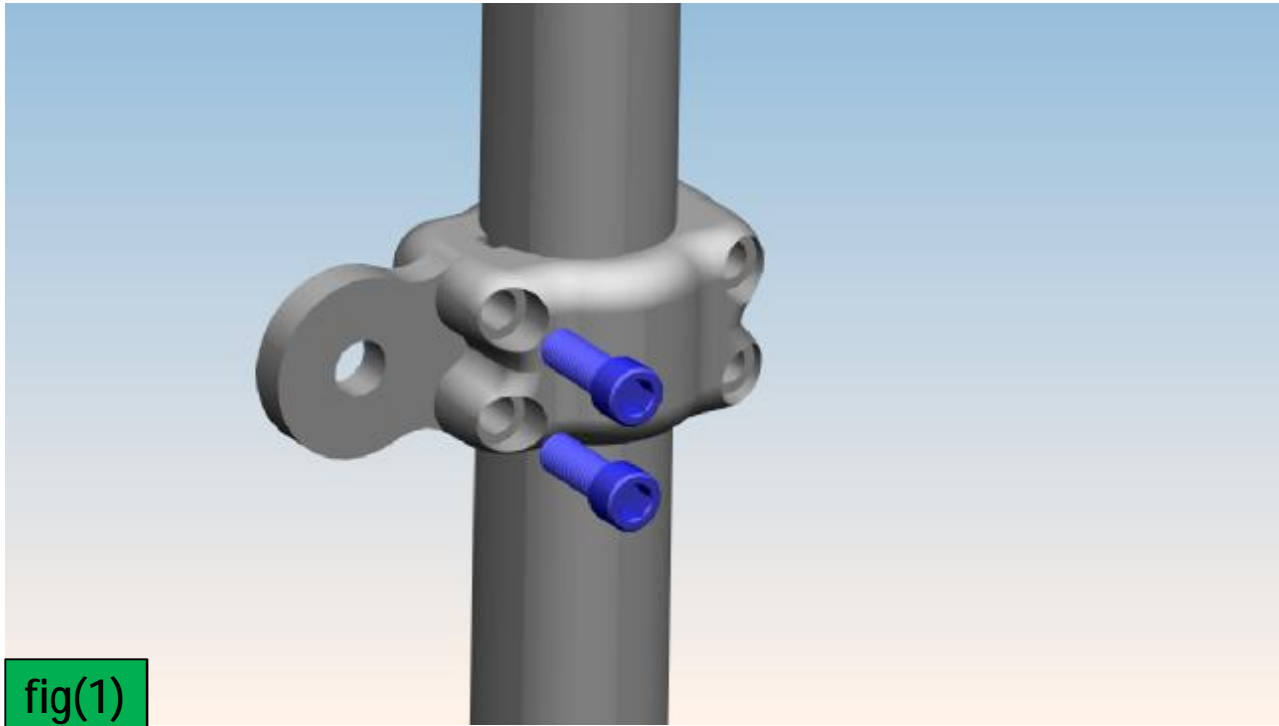
- This is the Shoulder Seat Belt Bar Assembly for the 2005-2011 Mustang Tiger Cage.
- This kit comes with everything to attach it to the Mustang Tiger Cage Main Assembly Hoop.

TIGER CLAMP



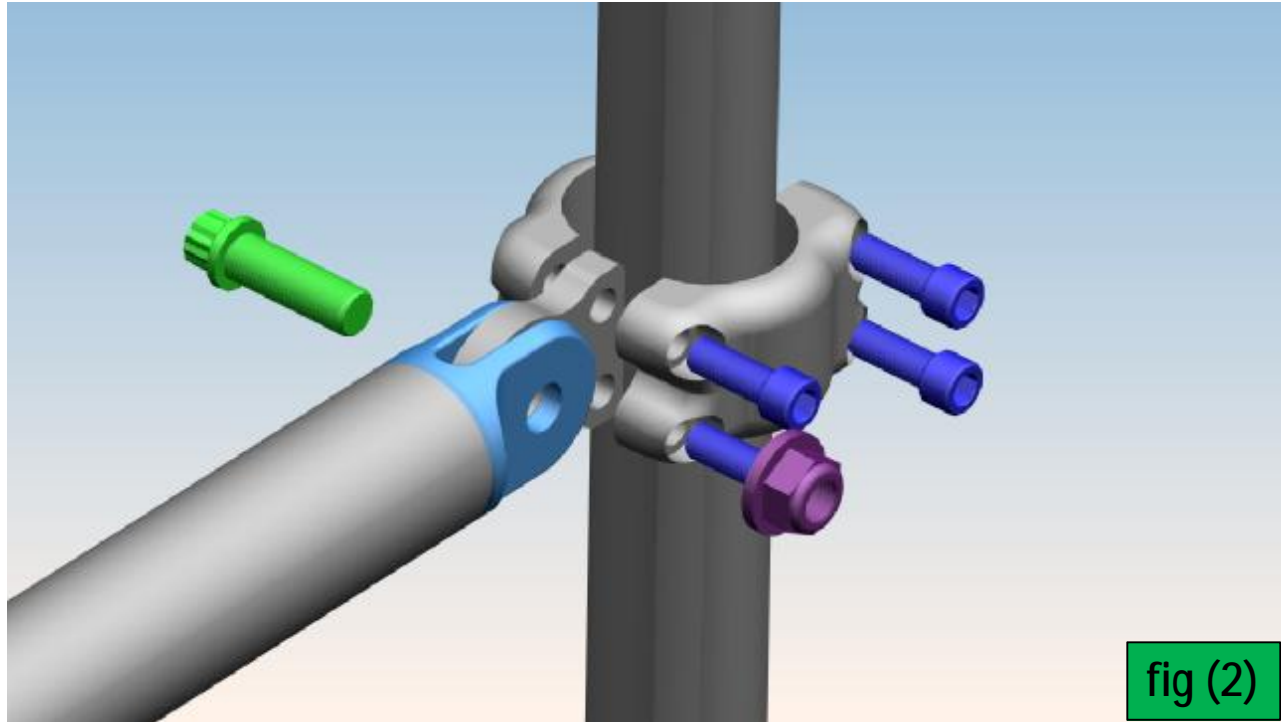
- In order to keep the "T" in the casting facing up, and the bolts facing the correct direction, there are two different direction clamps. Clamp half "A" will be mated to clamp half "B", Clamp half "C" will be mated to clamp half "D". Be very careful as to which clamp halves you are bolting together.
- In order to keep the "T" in the casting facing up, and the bolts facing the correct direction, there are two different direction clamps. Be very careful as to which clamp halves you are bolting together.
- A correctly assembled clamp should look like the one in the picture shown above; there should be a gap on one side for the tab to slide into.
- Assemble the clamps to the main hoop. Use clamp D on the driver side and clamp P on the passenger side.

INSTALLATION OF SEAT BELT BAR



- First step is to take the Tiger Cage Clamp and align it to the Mustang Main Hoop.
- Install the Tiger Cage pivot plate to the clamp with two 3/8"-16 x 1" allen head bolts. (see fig1)
- Make sure the clamp is exactly where you want it before tightening as the clamp may scratch the tubing.
- Install the other two 3/8"- 16 x 1"bolts to the clamp (see fig2)

INSTALLATION OF MUSTANG SEAT BELT BAR



- Install the Mustang Seat Belt Bar into the Tiger Cage pivot plate.
- Install two $\frac{1}{2}$ " -20 1 $\frac{1}{2}$ " long 12 point bolts into the seat belt bar and two $\frac{1}{2}$ " - 20 nuts.
- Repeat these steps to the passenger side of the car.

INSTALLED MUSTANG SEAT BELT BAR



- The Mustang Shoulder Seat Belt Bar can be adjusted on the main hoop to the desired location and clamped.
- Now your install is complete.